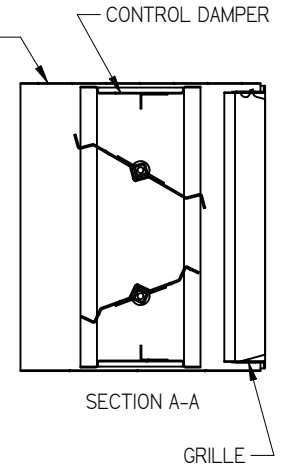
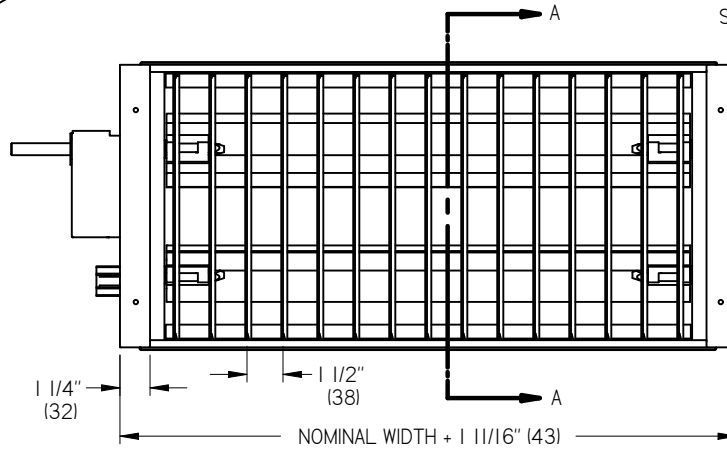
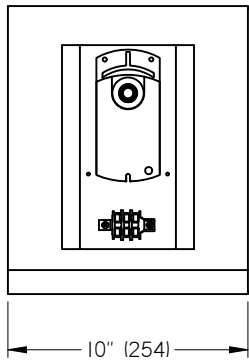
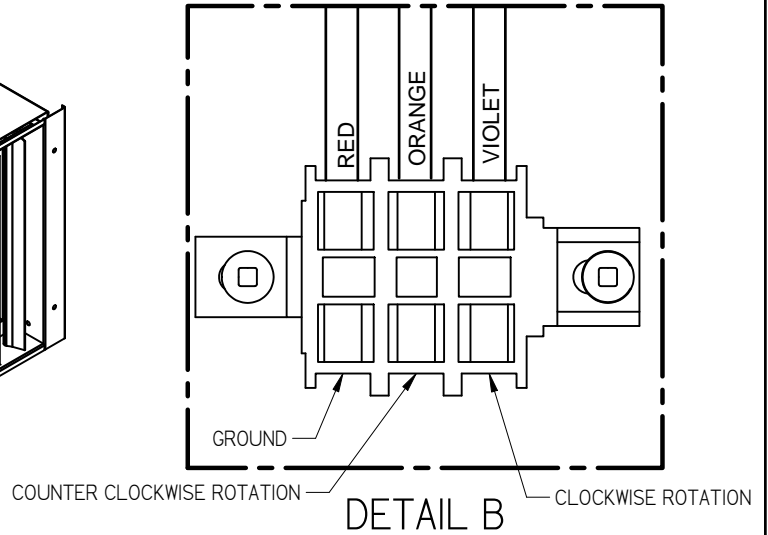
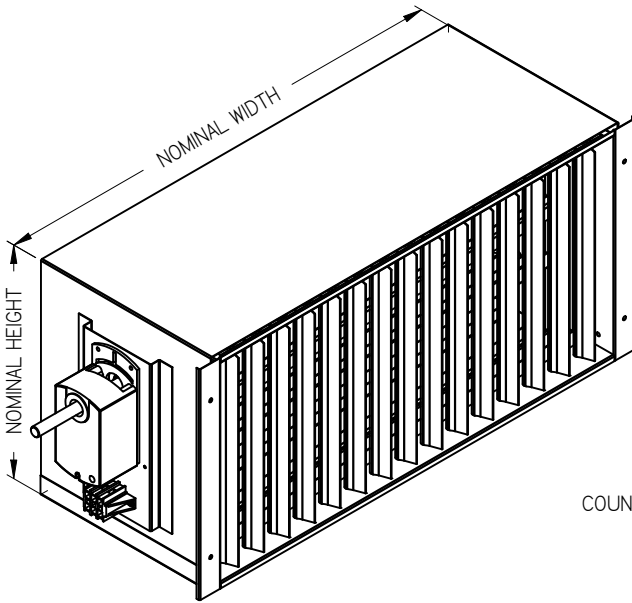


**DGD UNDERFLOOR DEFLECTION GRILLE IT DAMPER**



**GRILLE:**

- COATED STEEL FRAME
- EXTRUDED ALUMINUM BLADES
- STAINLESS STEEL INDEXING PLATE
- BLADES INDEX AND LOCK IN POSITION AT 0°, 15°, 30° OR 45° DEFLECTION
- BLADES ARE VERTICAL

**DAMPER:**

- GALVANIZED STEEL FRAME
- GALVANIZED STEEL TRIPLE-VEE BLADES
- OPPOSED BLADE TYPE

**ACTUATOR:**

- 24VAC, NON-SPRING RETURN
- FLOATING CONTROL
- TERMINAL BLOCK WIRING CONNECTIONS

**SLEEVE:**

- GALVANIZED STEEL

**FINISH:**

- DAMPER - MILL FINISH
- SLEEVE - MILL FINISH
- GRILLE:
  - MILL FINISH (STANDARD)
  - B12 WHITE (OPTIONAL)
  - B15 ALUMINUM
 (OTHER OPTIONAL FINISHES AVAILABLE)

**NOTES:**

- MINIMUM 12"x12" (305x305)
- MAXIMUM 48"x18" (1219x457)
- AVAILABLE IN WIDTH INCREMENTS OF 4" (102) AND HEIGHT INCREMENTS OF 2" (51)
- FACTORY TOLERANCE  $\pm 1/32$ " (1)

ALL METRIC DIMENSIONS ( ) ARE SOFT CONVERTED. IMPERIAL DIMENSIONS ARE CONVERTED TO METRIC AND ROUNDED TO THE NEAREST MILLIMETER.

<b>PROJECT:</b>		<b>PRICE</b>
<b>ENGINEER:</b>		
<b>CUSTOMER:</b>		259500
<b>SUBMITTAL DATE:</b>	<b>SPEC. SYMBOL:</b>	2012/11/21

**DGD**  
UNDERFLOOR DEFLECTION GRILLE WITH CONTROL DAMPER